

*pfcusa*<sup>®</sup>

# SANITARY DIVISION <sup>®</sup>A<sub>3</sub>

ADVANCED TECHNOLOGIES FOR SUPERIOR PERFORMANCE

**PFC-USA, LLC**

A Unit of: PFC Corporation

32206 Tamina Road.

Magnolia, TX 77354, USA

[www.pfcump.com](http://www.pfcump.com)





PFC-USA specializes in the manufacturing of sanitary process equipment to meet the highest standards in the industry.

We care about your cost, process efficiency and quality compliance, and will ensure that your values are reflected in your final products.

We work closely with outsourced partners who share the same core values in regard to customer satisfaction.

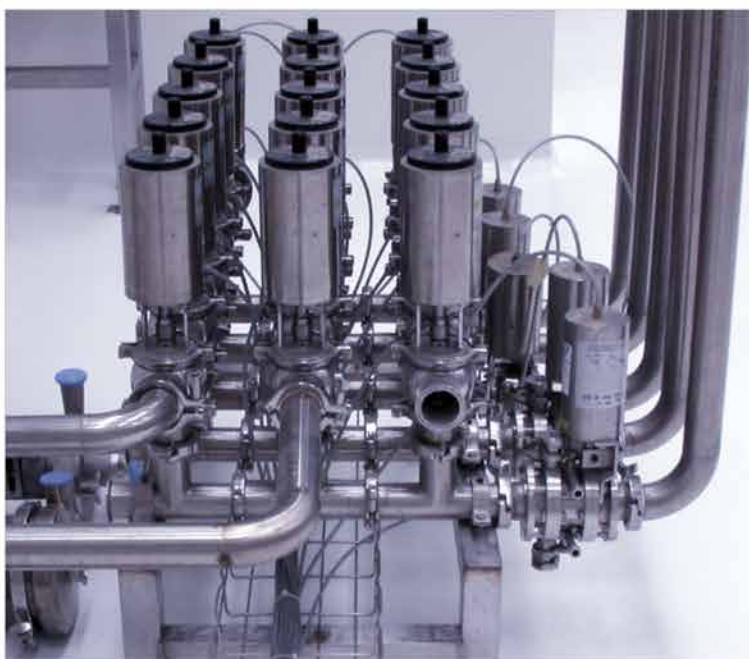
Having together well equipped state-of-the-art production facilities, and through our own worldwide distribution network, we can guarantee the full compliance of your requirements and expectations.

From Centrifugal and Positive Displacement Pumps, Valves and Filters, to Piping and Fittings, PFC-USA is your best one-stop shop option.



## PROCESSES MAIN MARKETS

FOOD PROCESSING  
EDIBLE OILS  
BEVERAGES  
DAIRY PRODUCTS  
PHARMACEUTICAL  
PERSONAL CARE  
COSMETICS  
CHEMICALS  
WATER TREATMENT  
INVERSE OSMOSIS  
MEMBRANE SYSTEMS  
ELECTRONICS  
SEMICONDUCTORS  
MEDICINE  
BIOTECHNOLOGY



## PUMPS SERIES



The strong performance and competitive price/value makes the versatile CSC Series close-coupled pump, the best option to replace other brand "C" Series pumps.

CIP capability design with 316L SS "wet-end" components with several seals available.

Both Bi-Wing and Tri-Lobe rotors are available, making them suitable for all CIP and SIP conditions. This design characteristic make LSI Series ideal for hygienic and industrial applications.

These centrifugal hygienic magnetic pump line conforms to GMP standard (Good Manufacturing Practices), enforced in the United States by the FDA.

Ideal on applications where leakage is not an option, the CSM Series of pumps have a wide temperature working range: -20°C to 150°C.

### CSC SERIES

### LSI SERIES

### CSM SERIES

# SANITARY 3A SERIES

## TUBING

PFC-USA's sanitary tubing exceeds ASTM A270 S2 and 3A specifications. Manufactured from the finest quality stainless steel materials and advanced technologies in production, our products are widely accepted in the European markets. Our raw materials are under strict control to ensure contamination free. From components to fittings and pumps to valves, we are constantly ensuring the highest quality products with the most competitive commercial conditions.

## FITTINGS

PFC-USA products are made in SS304 and SS316L according to DIN, 3A, ISO, and SMS standards (among others by request). Every pipefitting goes in line with US FDA and Good Manufacturing Practices (GMP) related to.



# ASME BPE SERIES

## TUBING

Manufactured to stringent ASME BPE and ASTM A270 S2 specifications, this high quality tubing is 100% bore-scoped and mechanically polished on both the ID and OD. Finishing processes guarantee specific ID and OD Ra values for customers application, minimizing surface anomalies. Moreover, all A270-BPE Series tubing is cleaned in a Class 100 Cleanroom, significantly reducing customer inspection requirements prior to installation. The finest quality stainless steel materials are made to meet criteria and formed by the manufacturing processes to assure highest weld seam integrity, to meet the most demanding applications. Our tubing is available in 1/2" (12.7 mm) to 6" (152.40 mm) OD in 20 ft. (6.1 m) lengths.

All tubing will be polished to 20  $\mu$ -in Ra (0.5  $\mu$ m) ID maximum and 30  $\mu$ -in Ra (0.8  $\mu$ m) OD maximum surface roughness measured per ASME/ANSI B46.1 with the profilometer reading at 90 degrees to major polishing pattern, with ends prepared for orbital welding and the tube ID cleaned for oxygen service.

## FITTINGS

PFC-USA offers a wide range of fittings and surface finishes for use in the Biotech and Pharmaceutical industries. Fittings are offered in sizes from 1/2" through 6", in both weld and clamp connections.



BPE Clamp Type



BPE Clamp to Weld Type



BPE Weld Type



# FILTERS SERIES

## SMF SERIES

Our sanitary housings have been designed for high purity and critical applications. Single cartridge sanitary housings are available in T-style or in-line configurations and offered in lengths from 5 through 40 inches.

Multi cartridge housings available in 3, 6, 8, 12 and 21 round models with swing bolt closures that are proven design suited for high purity beverage, chemical and pharmaceutical applications. All are manufactured in 316L stainless steel with 25 Ra internal finish.

SMF Series housings are standard with 2-226 style cartridge adaptors giving a positive locking tab seal. This allows flexibility in one housing to use different cartridge lengths and maximize filter performance and cost. Wide selection of membrane media: Polyethersulfone, Nylon, PVDF, PTFE, etc.

**pfcusa<sup>®</sup>**



# VALVES SERIES

Used in a wide variety of sanitary and industrial applications. Depending on the valve selected, the versatility of the PFC-USA valves allows them to be used as an on/off, and/or to throttle the flow of product. This valve offering covers low and higher-pressure applications and can handle viscous or non-viscous products. Valves meet FDA and 3A requirements.

BSV (Ball), FSV (Butterfly), CSV (Check), and DSV (Diver) Series, are available in 304 or 316L stainless steel; 1" through 4" tube sizes. Clamp or Weld ends are standard (other connections are available upon request). Available seat materials include Silicone, Viton, and EPDM.



**BSV SERIES**



**FSV SERIES**



**CSV SERIES**



**DSV SERIES**

